

\$649,900 - 432 Whiteland Drive Ne, Calgary

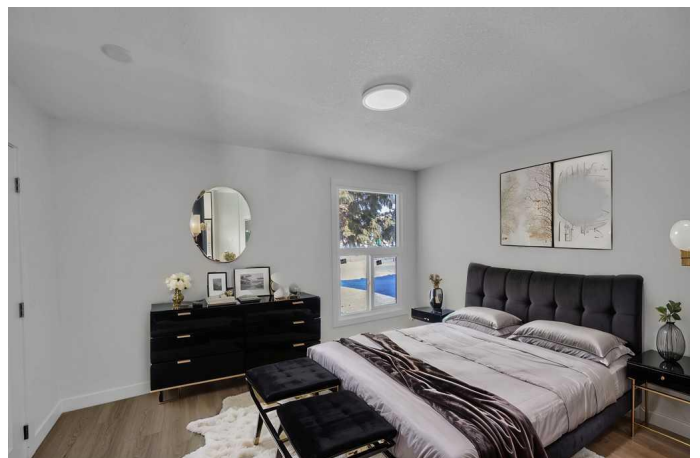
MLS® #A2193477

\$649,900

5 Bedroom, 2.00 Bathroom, 1,067 sqft
Residential on 0.10 Acres

Whitehorn, Calgary, Alberta

Welcome to 432 Whiteland Drive NE, a fully renovated gem where modern elegance meets classic charm in a sought-after neighborhood. Situated on a spacious north-facing lot with back alley access, this home offers both style and convenience. Step into a bright and inviting living room featuring a stunning feature wall with an electric fireplace, complemented by luxury vinyl plank flooring and sleek pot lights throughout. The main level boasts a beautifully designed U-shaped High gloss kitchen with quartz countertops and brand-new stainless steel appliances which are on order, offering both functionality and sophistication. The spacious dining area is perfect for gatherings, while three generously sized bedrooms with new vinyl windows provide ample natural light and comfort, and a full bathroom with a standing shower. A separate entrance leads to a two-bedroom illegal basement suite, complete with its Separate kitchen, living area, full bathroom with standing shower, and separate laundry. New Hot water tank, New vinyl windows. Enjoy a private south-facing backyard, a deck perfect for outdoor entertaining, and a double detached garage with convenient back alley access. Located in a prime area, this home is just minutes from shopping centers, schools, playgrounds, and public transit services, ensuring easy commuting and access to everyday essentials. Don't miss out on this incredible opportunity—schedule your viewing today!



Built in 1977

Essential Information

| | |
|----------------|-------------|
| MLS® # | A2193477 |
| Price | \$649,900 |
| Bedrooms | 5 |
| Bathrooms | 2.00 |
| Full Baths | 2 |
| Square Footage | 1,067 |
| Acres | 0.10 |
| Year Built | 1977 |
| Type | Residential |
| Sub-Type | Detached |
| Style | Bungalow |
| Status | Active |

Community Information

| | |
|-------------|------------------------|
| Address | 432 Whiteland Drive Ne |
| Subdivision | Whitehorn |
| City | Calgary |
| County | Calgary |
| Province | Alberta |
| Postal Code | T1Y 3M7 |

Amenities

| | |
|----------------|------------------------------------|
| Parking Spaces | 3 |
| Parking | Double Garage Detached, Off Street |
| # of Garages | 2 |

Interior

| | |
|-------------------|--|
| Interior Features | Granite Counters, No Animal Home, No Smoking Home, Separate Entrance, Storage, Vinyl Windows |
| Appliances | Dishwasher, Dryer, Electric Stove, Garage Control(s), Range Hood, Refrigerator, Stove(s), Washer |
| Heating | Central, Forced Air |
| Cooling | None |
| Fireplace | Yes |
| # of Fireplaces | 1 |
| Fireplaces | Electric |

| | |
|--------------|---|
| Has Basement | Yes |
| Basement | Exterior Entry, Finished, Full, Suite, Walk-Up To Grade |

Exterior

| | |
|-------------------|--|
| Exterior Features | Private Yard |
| Lot Description | Back Lane, Back Yard, Interior Lot, Landscaped, Rectangular Lot, Treed |
| Roof | Asphalt Shingle |
| Construction | Vinyl Siding, Wood Frame |
| Foundation | Poured Concrete |

Additional Information

| | |
|----------------|---------------------|
| Date Listed | February 10th, 2025 |
| Days on Market | 55 |
| Zoning | R-CG |

Listing Details

| | |
|----------------|-------------|
| Listing Office | PREP Realty |
|----------------|-------------|

Data is supplied by Pillar 9â„¢ MLSÂ® System. Pillar 9â„¢ is the owner of the copyright in its MLSÂ® System. Data is deemed reliable but is not guaranteed accurate by Pillar 9â„¢. The trademarks MLSÂ®, Multiple Listing ServiceÂ® and the associated logos are owned by The Canadian Real Estate Association (CREA) and identify the quality of services provided by real estate professionals who are members of CREA. Used under license.